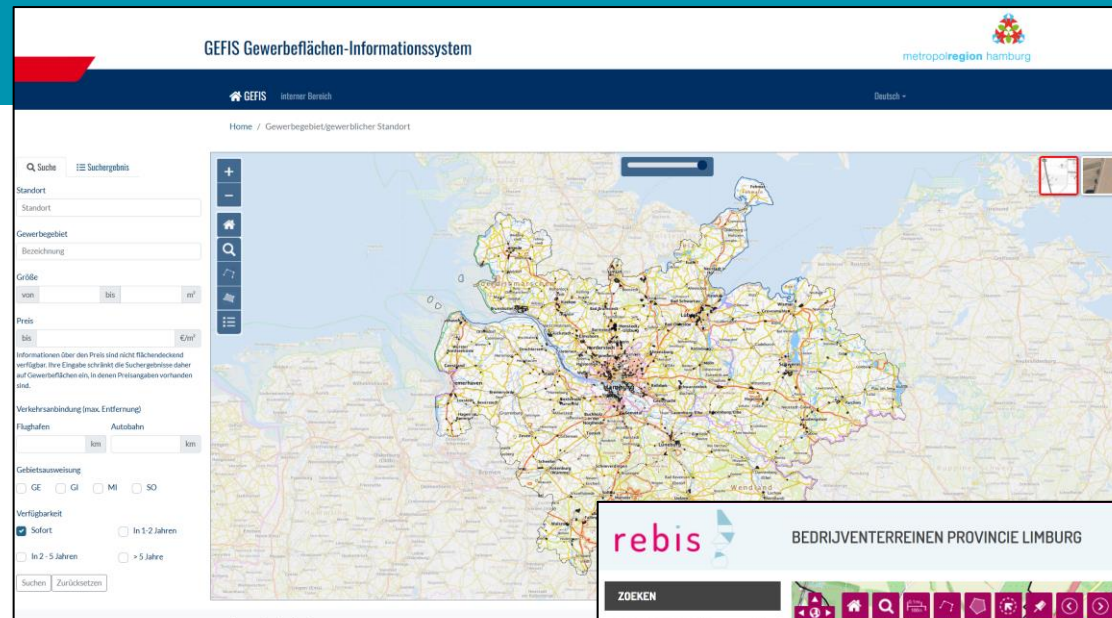


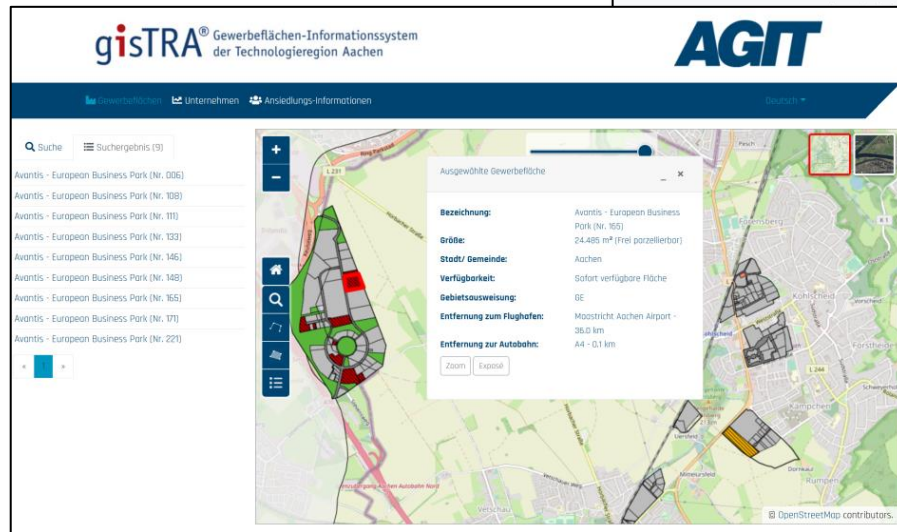
Jürgen Dressel, CEO

GeoDok

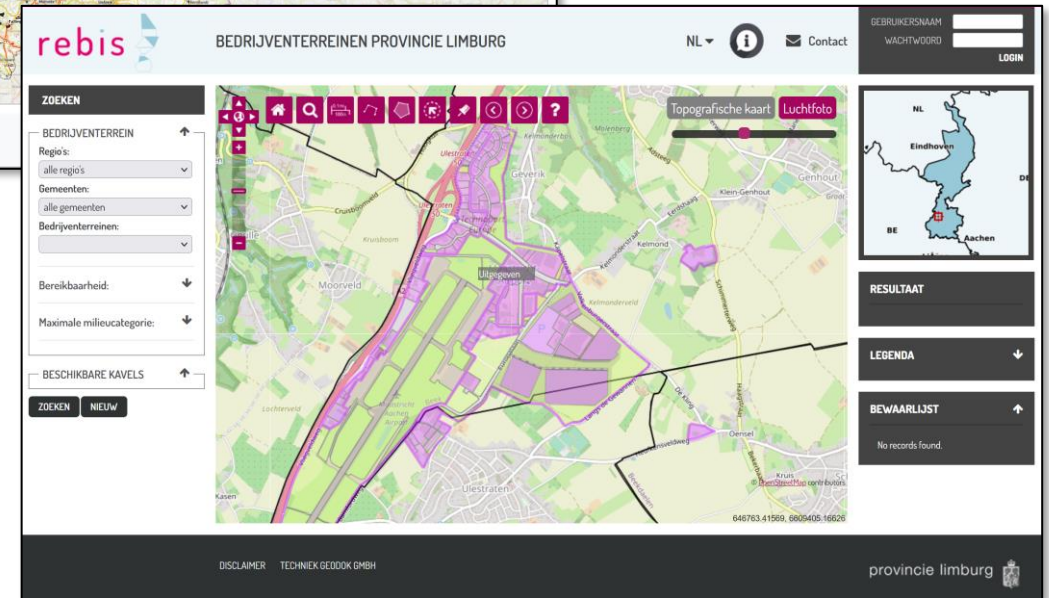
Geoinformatik
Bielefeld, D



GEFIS -
Metropolregion
Hamburg



gisTRA Region Aachen



rebis – Provincie Limburg (NL)

Jürgen Dressel, CEO

GeoDok
Geoinformatik

Bielefeld, D



Projektmanagement implementation
Development, construction and
implementation the software
Server Hosting and Maintenance

Roger Vaessens, Senior Advisor

**Etil research
group**

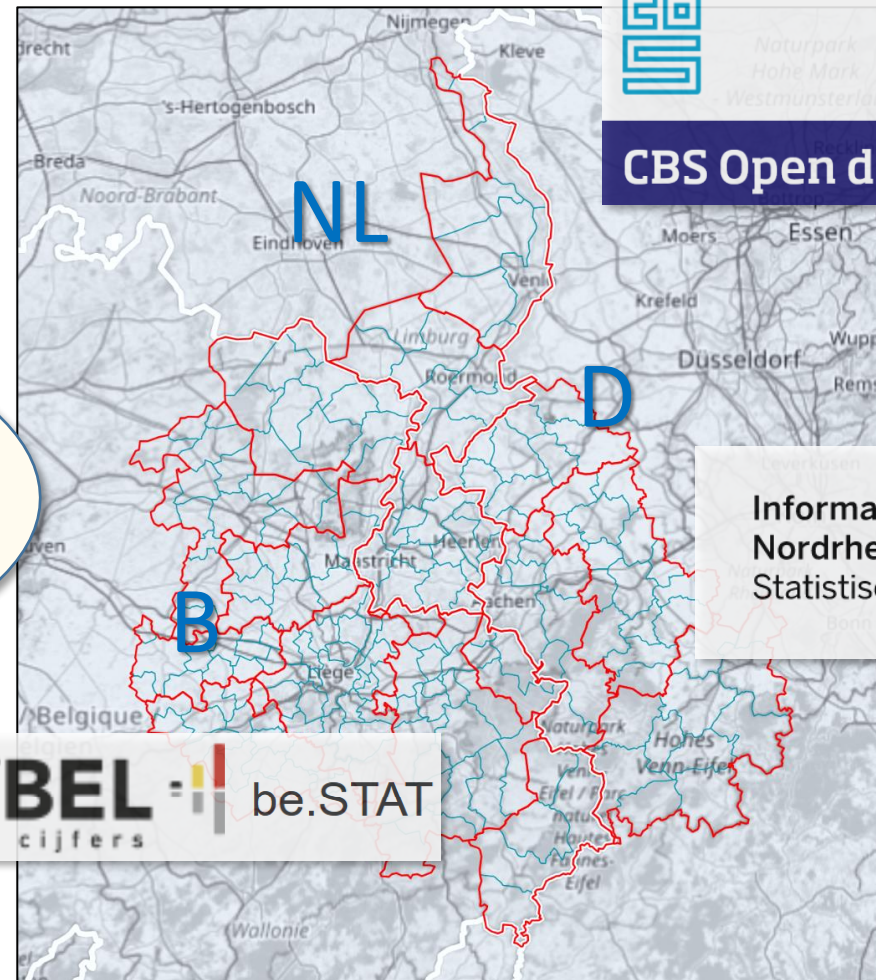
Heerlen, NL



Collection of data and
information from third parties
User training and report

There are already sources
for statistical indicators on
the topic of "housing" !

*Why do we need a
new portal
"Housing Monitor
EMR" ?*



CBS Open data StatLine

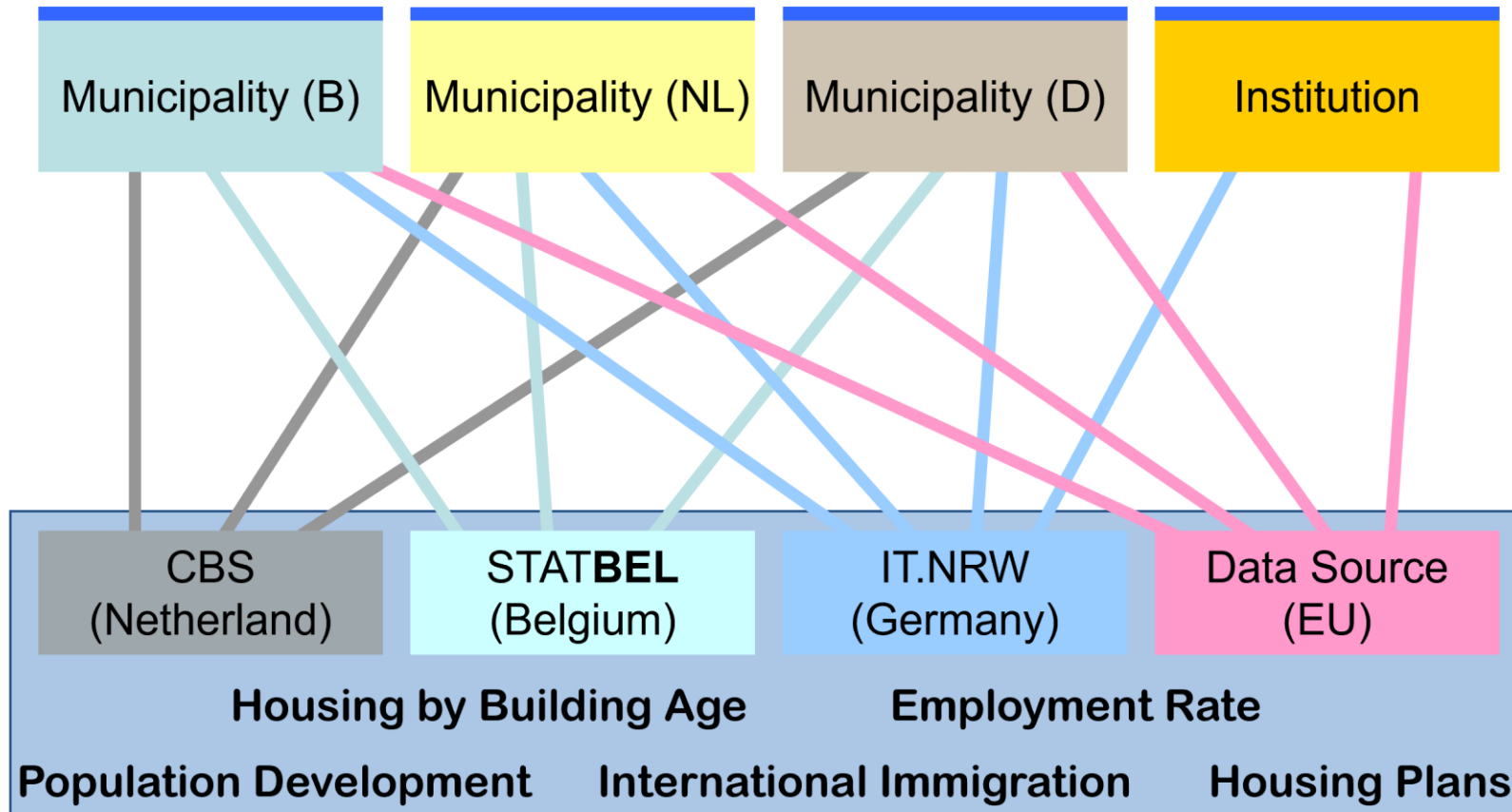
Information und Technik
Nordrhein-Westfalen
Statistisches Landesamt



STATBEL be.STAT
België in cijfers



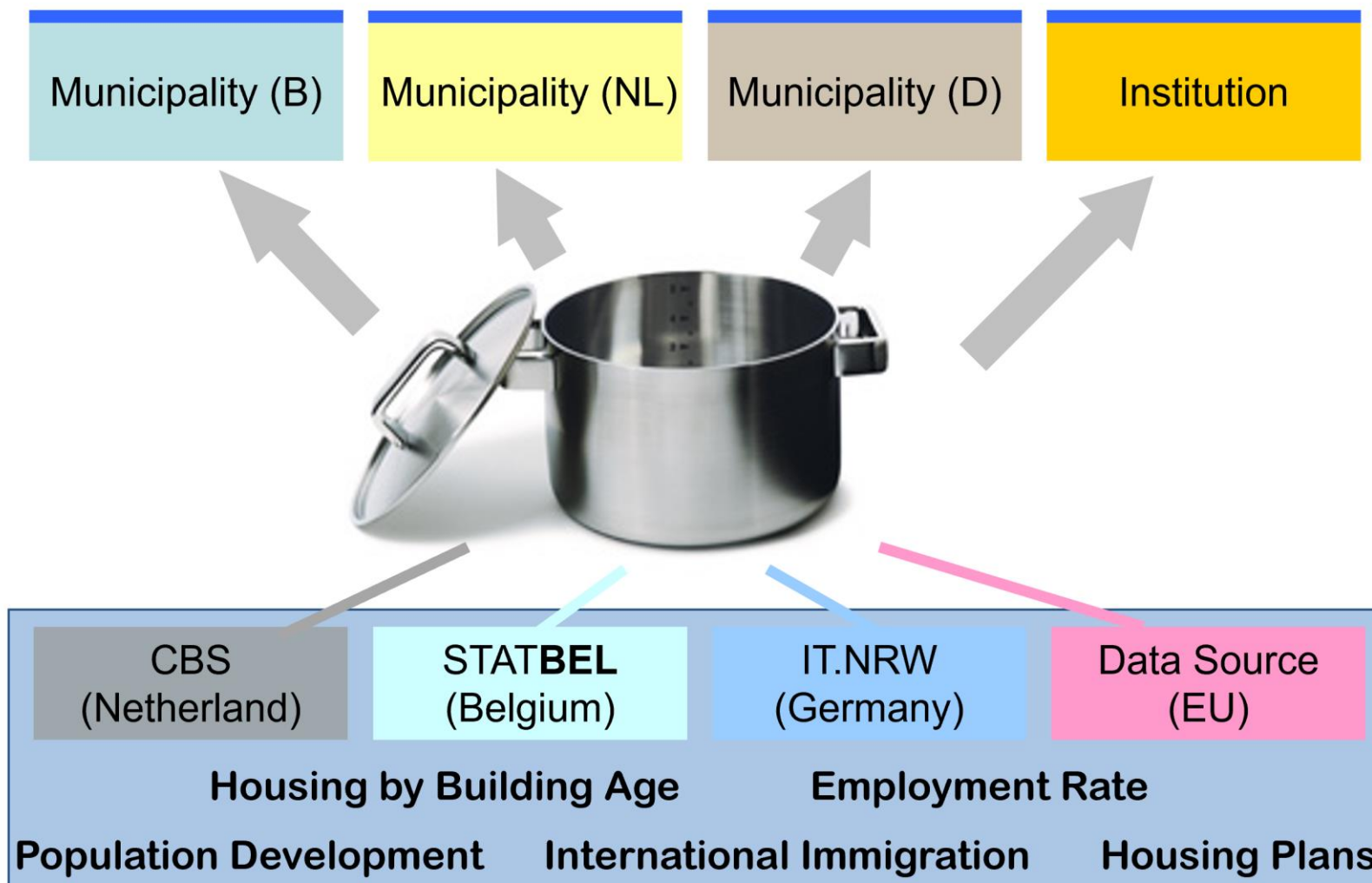
The situation until today...



Disadvantages:

- Many heterogeneous data sources
- Time-consuming data acquisition
- Time-consuming media breaks
- Difficult to compare
- Research and analyzes relevant to planning are often not carried out

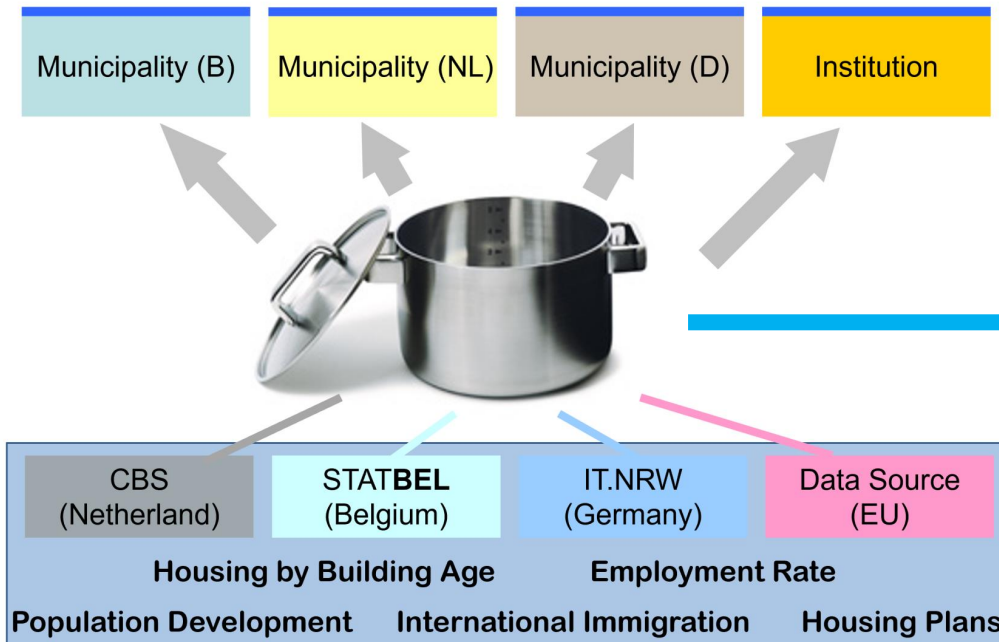




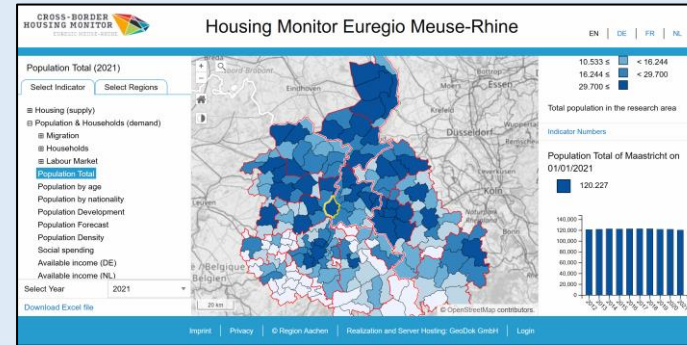
From today: Milestone with added values ...

- Everyday work: Faster, more efficient and cost-effective procurement of relevant information
- Targeted planning: expansion of spatial and content-related horizons, better comparisons, broader basis as a basis for action
- Integration into networks: Extension of existing systems
- Modern technologies: New analysis functions, uniform monitoring, expandability, easier integration into your municipal systems
- Lighthouse function: Structuring of Euregional processes in the EMR

Which infrastructure was provided in the project ?



Housing Monitor EMR



1. Web Applikation

- User interface
- Interactive map
- Analysis functions
- Downloads

2. Server Application

- Structured database
- Backend Application

3. Data Input Interface:

- Automatically
- Semi-automatic
- Manual

- Language selection

Selection:

- Indicators
- Spatial reference
- Year of collection
- Aggregations
- Individual evaluations

Population Total (2021)

Select Indicator

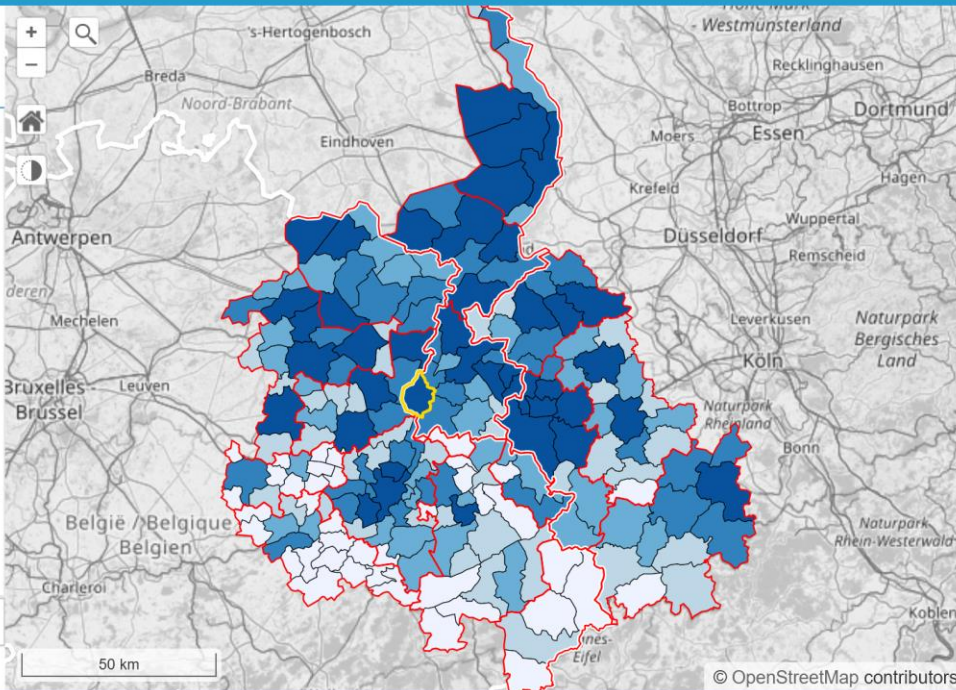
Select Regions

- ☒ Housing (supply)
- ☒ Population & Households (demand)
 - ☒ Migration
 - ☒ Households
 - ☒ Labour Market
 - Population Total**
 - Population by age
 - Population by nationality
 - Population Development
 - Population Forecast
 - Population Density
 - Social spending
 - Available income (DE)
 - Available income (NL)

Select Year 2021

[Download Excel file](#)

- Data export
- Download



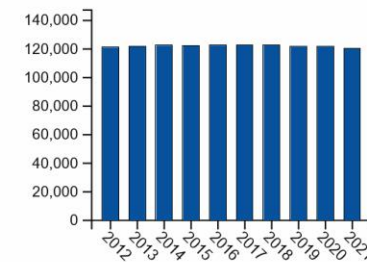
10.533 ≤ < 16.244
16.244 ≤ < 29.700
29.700 ≤

Total population in the research area

Indicator Numbers

Population Total of Maastricht on 01/01/2021

120.227



Data visualizations:

- Interactive map
- Legend
- Key data
- Business graphics
- etc.

[Imprint](#) | [Privacy](#) | © Region Aachen | Realization and Server Hosting: GeoDok GmbH | [Login](#)

Interreg
Euregio Meuse-Rhine
European Regional Development Fund

region
aachen



provincie limburg



Ostbelgien

- Partner, Links, Login

Going online Presentation of use-cases

